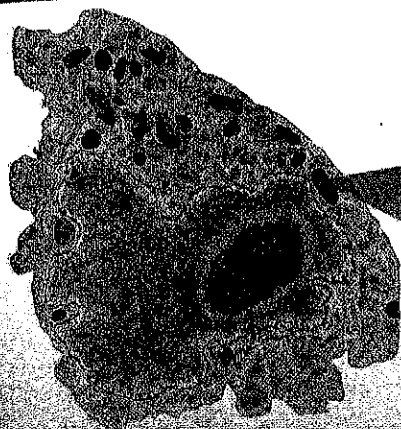


Cellular Respiration



Animal cell
(magnified 2400x)

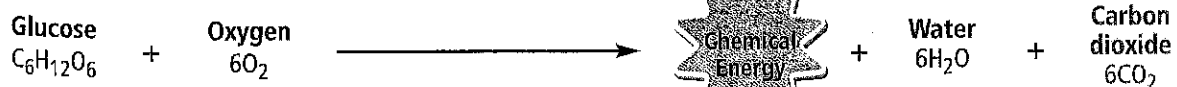
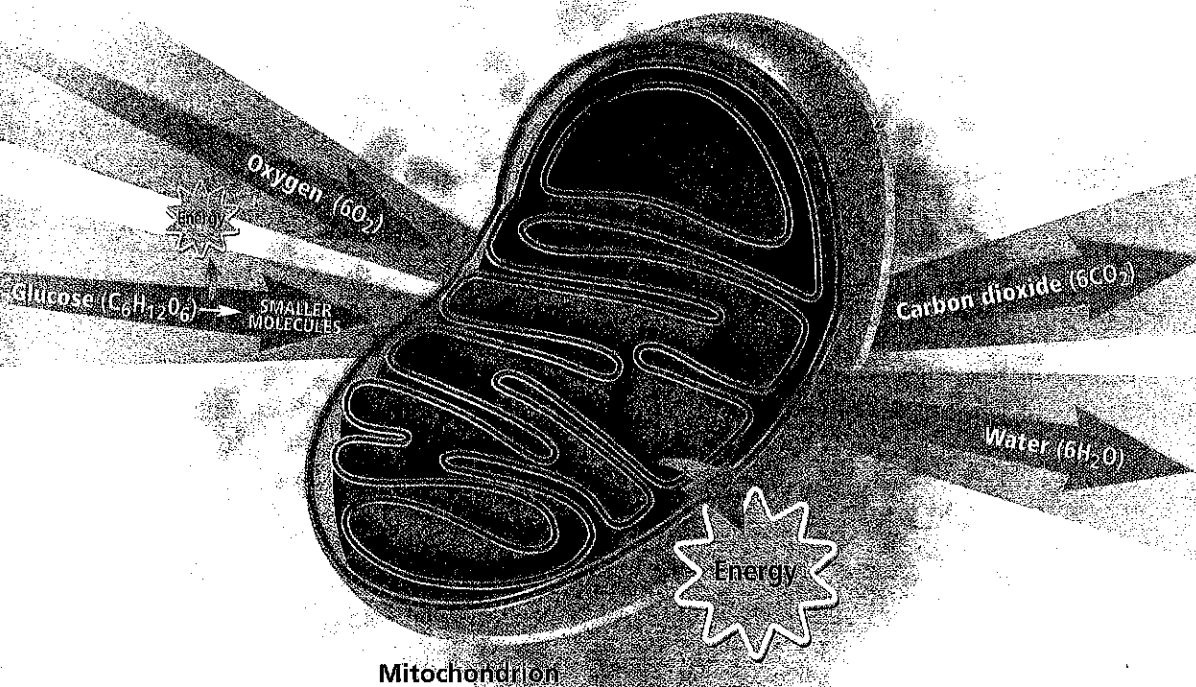
Mitochondrion



Leaf cell (magnified 2200x)



- 1 The starting materials**
Glucose and oxygen enter the cell. Glucose is split into smaller molecules.
- 2 The process** Inside the mitochondria more chemical bonds are broken in the smaller molecules. Oxygen is needed for this process.
- 3 The products** Energy is released, and water and carbon dioxide are produced.



**READING
VISUALS**

Where in the process is energy released?